



Electronic Power Conditioners (EPCs)

Our electronic power conditioners (EPCs) transform satellite bus voltages into the high voltages required for specific Traveling-Wave Tube (TWT) requirements.

We have designed, produced, and delivered numerous models with TWTA output power levels ranging from 2 - 330 watts and frequencies from L- to V-Band.

In Orbit: > 4000

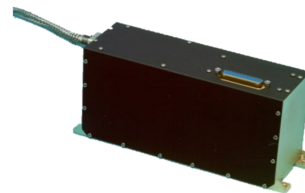
Operating Hours: 280 million | Spot FIT Rate: < 100

**The ONLY Vertically Integrated
Space Traveling Wave Tube
Amplifier (TWTA) Supplier in
the World**

**The ONLY Manufacturer of
Space-qualified Traveling Wave
Tubes (TWTs) in the USA**



2000Hx 7kV Regulated Bus Single EPC



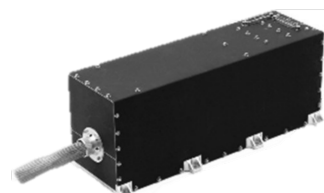
2300Hx 7kV Unregulated Bus Single EPC



2410Hx 7kV Regulated Bus Dual EPC



2600Hx 12kV Regulated Bus Single EPC



**1693Hx: 14kV Regulated or
Unregulated Bus Single EPC**



Electronic Power Conditioners

MODEL	Compatible TWTs	Single/ Dual	Regulated/ Unregulated	Max TWT Voltage	Bus Voltage	Max DC Power Handling	Approximate Efficiency	Dimensions (L x W x H, inches)	Mass Range	Units Delivered
2000Hx	L- thru Q-band	Single	Regulated	7 kV	36 - 100 V	300 W	94%	7.0 x 2.4 x 3.9	1080 to 1360 g	
2300Hx	L- thru Q-band	Single	Unregulated	7 kV	21 - 46 V	300 W	94%	8.0 x 2.5 x 3.9	1080 to 1360 g	
2410Hx	L- thru Q-band	Single (high power) and Dual	Regulated	7 kV	36 - 100 V	550 W	94%	10.2 x 3.1 x 3.6	1720 to 1850 g	
2600Hx (12 kV)	All	Dual	Regulated	12 kV	100 V	600 W	94%	10.0 x 3.3 x 4.3	2600 g	
1693Hx	Ka-band - V-band	Single	Unregulated	14 kV	21 - 35 V	550 W	89 - 91%	13.0 x 4.0 x 5.4	4600 g	

Stellant Systems is a partner for civil, military, and commercial organizations whose missions seek to ensure a safe, aware, and connected world. We are a premier manufacturer of critical spectrum and power amplification systems for defense, space, medical & scientific and industrial customers worldwide.

www.StellantSystems.com



Headquarters

3100 Lomita Blvd.
Torrance, California 90505
T: 310-517-6000
info@stellantsystems.com

1035 Westminster Dr.
Williamsport, Pennsylvania 17701
T: 570-326-3561

107 Woodmere Rd.
Folsom, California 95630
T: 916-351-4500

