

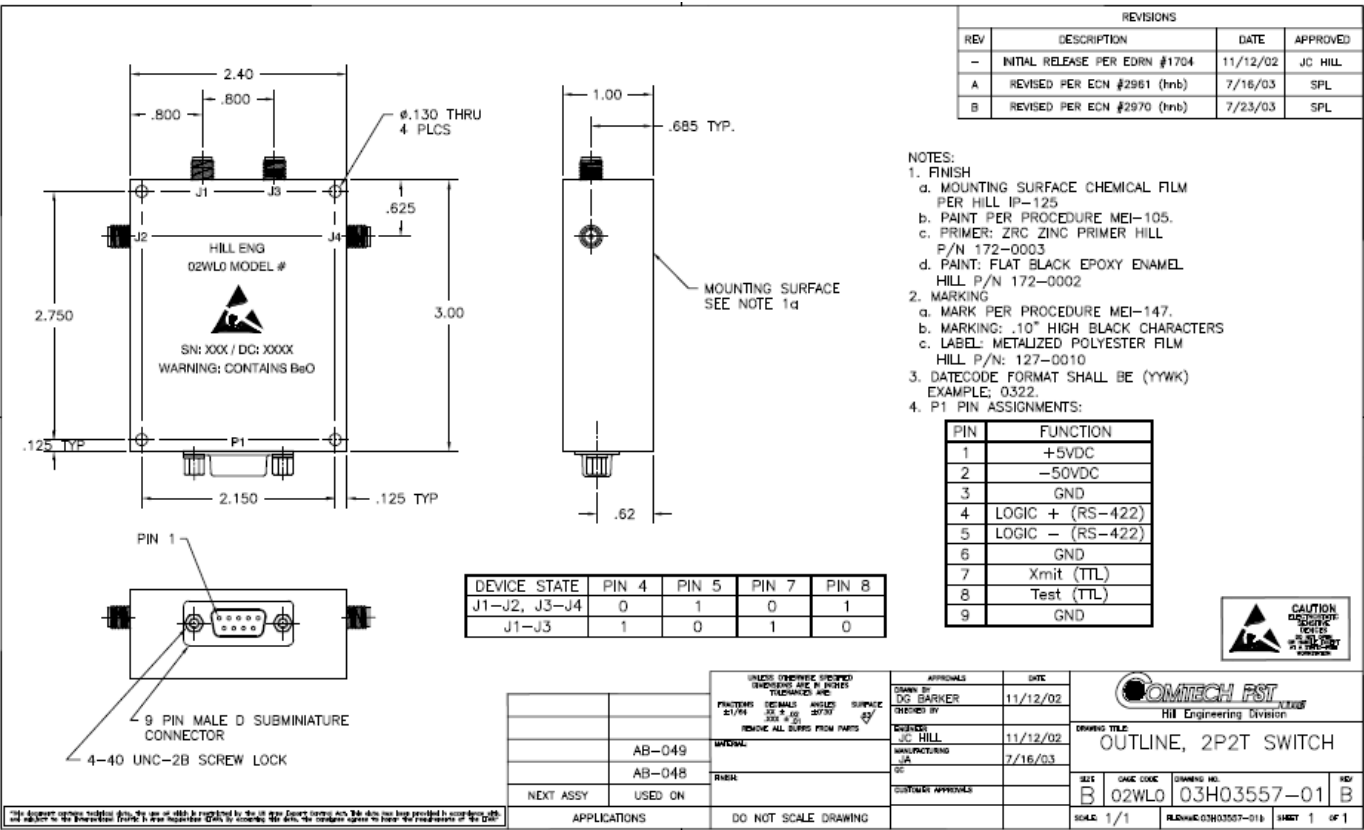
	Cage Code:	Title:	Date:	Rev:	Model no:
	02WLO	PRODUCT DATA (subject to change)	11/23/2009	None	AB-048

This document describes the performance of a high power dual in line SPDT switch. It is used to switch a filter or fixed attenuator in/out of the RF line. This is a cold switched design i.e.; switched while RF is off. Proper bias levels must be applied when operating this device.

ITEM NO	CHARACTERISTIC	CONDITIONS	MIN	MAX	UNITS	COMMENTS
1	POWER SPECIFICATION	IN BAND				
1.1	OPERATING FREQUENCY	J1-J2	7.8	12.6	GHz	
1.2	PEAK POWER	J1-J2		800	WATTS	
1.3	PULSE WIDTH	J1-J2		40	μS	
1.4	DUTY	J1-J2		8	%	
1.5	AVG. POWER	J1-J2		64	WATTS	
1.6	CW POWER	J1-J2		64	WATTS	
1.7	HARMONICS IN	J1-J2		-10	dBc	
2	POWER SPECIFICATIONS	GUARD BAND				
2.1	FREQUENCY	J1-J2	12.6	13.6	GHz	
2.2	PEAK POWER	J1-J2		10	WATTS	
2.3	PULSE WIDTH	J1-J2		40	μS	
2.4	DUTY	J1-J2		8	%	
2.5	AVG POWER	J1-J2		.8	WATTS	
3	POWER SPECIFICATIONS	OUT OF BAND				
3.1	FREQUENCY	ALL PORTS	>13.6		GHz	
3.2	PEAK POWER	ALL PORTS		0.1	WATTS	
3.3	PULSE WIDTH	ALL PORTS	CW		μS	
3.4	DUTY	ALL PORTS	CW		%	
3.5	CW POWER	ALL PORTS		0.1	WATTS	
4	POWER SPECIFICATIONS					
4.1	MAX POWER, CW OR PULSED	J1-J3; J3-J4		1.0	WATT	
5	INSERTION LOSS					
5.1			2.6		dB	
6	ISOLATION					
6.1	J1-J3		100		dB	
6.2	J1-J2; J1-J4		40		dB	
7	PHASE					
7.1	MATCHING/TRACKING					NOT SPECIFIED

	Cage Code:	Title:	Date:	Rev:	Model no:
	02WLO	PRODUCT DATA (subject to change)	11/23/2009	None	AB-048

ITEM NO	CHARACTERISTIC	CONDITIONS	MIN	MAX	UNITS	COMMENTS
8	VSWR					
8.1	PORTS NOT SELECTED					INFINITE (Reflective)
8.2	INPUT & OUTPUT, SELECTED PORTS			1.8:1		
8.3	TERMINATION			2.0:1		
8.4	SOURCE			2.0:1		
9	HARMONICS & SPURS					
9.1	INTERNALLY GENERATED					NOT SPECIFIED
10	SWITCHING					
10.1	SPEED	50% Logic To 0.5dB		600	nS	
10.2	reserved					
10.3	SWITCHING RATE			125	kHz	
10.4	COMMAND LOGIC	RS-422				Balanced
10.5	VIDEO LEAKAGE	J3 PORT ONLY		0.5	V	
10.6	LOGIC TABLE					SEE DWG 3557
11	D.C. POWER					
11.1	POSITIVE BIAS VOLTAGE		4.8	5.2	VDC	
11.2	NEGATIVE BIAS VOLTAGE		-46	-54	VDC	
11.4	POSITIVE BIAS CURRENT			250	mA	
11.5	NEGATIVE BIAS CURRENT			50	mA	
NOTE: NO OVER-VOLTAGE OR REVERSE POLARITY PROTECTION IS PROVIDED WITH THIS SWITCH.						
12	CONNECTORS					
12.1	RF					SMAF
12.3	DC & LOGIC					9 PIN "D"
13	MECHANICAL					
13.1	WEIGHT			18	Oz.	
13.2	OUTLINE					SEE DWG 3557
14	ENVIRONMENTAL					
14.1	OPERATING TEMPERATURE		0	+60	°C	
14.2	STORAGE TEMPERATURE		-20	+85	°C	
14.3	VIBRATION LEVEL					SHELTERED GROUND MOBILE



REVISIONS			
REV	DESCRIPTION	DATE	APPROVED
-	INITIAL RELEASE PER EDNR #1704	11/12/02	JC HILL
A	REVISED PER ECN #2961 (hnb)	7/16/03	SPL
B	REVISED PER ECN #2970 (hnb)	7/23/03	SPL

- NOTES:
- FINISH
 - MOUNTING SURFACE CHEMICAL FILM PER HILL IP-125
 - PAINT PER PROCEDURE MEI-105.
 - PRIMER: ZRC ZINC PRIMER HILL P/N 172-0003
 - PAINT: FLAT BLACK EPOXY ENAMEL HILL P/N 172-0002
 - MARKING
 - MARK PER PROCEDURE MEI-147.
 - MARKING: .10" HIGH BLACK CHARACTERS
 - LABEL: METALIZED POLYESTER FILM HILL P/N: 127-0010
 - DATECODE FORMAT SHALL BE (YYWK) EXAMPLE: 0322.
 - P1 PIN ASSIGNMENTS:

PIN	FUNCTION
1	+5VDC
2	-50VDC
3	GND
4	LOGIC + (RS-422)
5	LOGIC - (RS-422)
6	GND
7	Xmit (TTL)
8	Test (TTL)
9	GND

DEVICE STATE	PIN 4	PIN 5	PIN 7	PIN 8
J1-J2, J3-J4	0	1	0	1
J1-J3	1	0	1	0



UNLESS OTHERWISE SPECIFIED DIMENSIONS ARE IN INCHES TOLERANCES ARE:		APPROVALS	DATE
FRITERS	DECIMALS	DESIGNED BY	11/12/02
SI/IN	XX.XX	CHECKED BY	
	XX.XX	DATE	11/12/02
	XXX.XXX	MANUFACTURING	7/16/03
	XXX.XXX	DATE	
		CUSTOMER APPROVALS	

COMTECH PST
Hill Engineering Division

DRAWING TITLE: **OUTLINE, 2P2T SWITCH**

SIB	CAGE CODE	DRAWING NO.	REV
B	02WLO	03H03557-01	B

SCALE: 1/1 REF: HILL/030357-01B SHEET 1 OF 1

THIS DOCUMENT CONTAINS NEITHER RECOMMENDATIONS NOR WARRANTIES OF ANY KIND, EITHER EXPRESSED OR IMPLIED, BY THE USE OF ANY INFORMATION HEREIN. THE USER ASSUMES ALL LIABILITY FOR THE USE OF THIS INFORMATION.