

	Cage Code:	Title:	Date:	Rev:	Model no:
	02WL0	PRODUCT DATA (Subject to change)	03/6/06	N/A	H23-024

This document describes the performance of a high power 1P2T switch. This is a cold-switched design i.e.; switched while RF is off. Proper bias (section 11) must be applied to this switch under all operating conditions. This switch is absorptive at low power levels (section 8.2.1)

ITEM NO	CHARACTERISTIC	CONDITIONS	MIN	MAX	UNITS	COMMENTS
1	POWER SPECIFICATION	IN BAND				
1.1	FREQUENCY		4	8	GHz	
1.2	PEAK POWER			1500	WATTS	
1.3	PULSE WIDTH		50	300	nS	
1.4	DUTY			4	%	
1.5	AVG POWER			60	WATTS	
1.6	CW POWER				WATTS	NOT SPECIFIED
2	POWER SPECIFICATIONS	GUARD BAND				
2.1	FREQUENCY		8	8.6	GHz	
2.2	PEAK POWER			10	WATTS	
2.3	PULSE WIDTH		50	300	nS	
2.4	DUTY			4	%	
2.5	AVG POWER			0.4	WATTS	
3	POWER SPECIFICATIONS	OUT OF BAND				
3.1	FREQUENCY		>8.6		GHz	
3.2	PEAK POWER			30	dBm	
3.3	PULSE WIDTH			CW	μS	
3.4	DUTY			CW	%	
3.5	CW POWER			30	dBm	
4	OPERATING FREQUENCY		4	8	GHz	
5	INSERTION LOSS			1.4	dB	
6	ISOLATION					
6.1	I/O		40		dB	
7	PHASE					
7.1	MATCHING					NOT SPECIFIED
7.2	TRACKING					NOT SPECIFIED
8	VSWR					
8.1	PORT SELECTED			1.6:1		
8.2	PORT NOT SELECTED			2:1		
8.2.1	OFF TERMINATION POWER	PEAK POWER AVERAGE POWER		2 80	WATTS miliwatts	
8.3	LOAD			2.0:1		
8.4	SOURCE			2.0:1		

Federal Cage Code 02WLO

	Cage Code:	Title:	Date:	Rev:	Model no:
	02WLO	PRODUCT DATA (Subject to change)	03/6/06	N/A	H23-024

ITEM NO	CHARACTERISTIC	CONDITIONS	MIN	MAX	UNITS	COMMENTS
9	HARMONICS & SPURS					
9.1	INTERNALLY GENERATED		40		dBc	
10	SWITCHING					
10.1	SPEED	TO 0.50DB I.L.		1	uS	
10.2	SWITCHING RATE			200	KHz	
10.3	VIDEO LEAKAGE			2	Vpp	Across 50 Ohms
10.4	COMMAND LOGIC	RS-422				120 Ohm Balanced logic
10.5	LOGIC TABLE					SEE DWG 3414
11	D.C. POWER					
11.1	POSITIVE BIAS VOLTAGE 1		4.80	5.20	VDC	
11.3	NEGATIVE BIAS VOLTAGE		-66	-74	VDC	
11.4	POSITIVE BIAS CURRENT 1			300	mA	
11.4	NEGATIVE BIAS CURRENT			30	mA	
11.5	NOTE : Voltage Protection – This unit does not have over-voltage or reverse polarity protection on any bias port.					
12	CONNECTORS					
12.1	RF					SMAF
12.3	DC					Solder Pins
13	MECHANICAL					
13.1	WEIGHT			4	Oz	
13.2	OUTLINE					See Dwg 3414
14	ENVIRONMENTAL					
14.1	OPERATING TEMPERATURE		0	+50	°C	
14.2	STORAGE TEMPERATURE		-20	+55	°C	
14.3	VIBRATION LEVEL					GROUND TRANSPORT



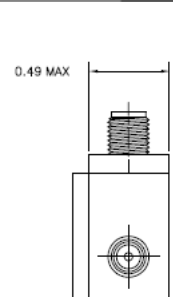
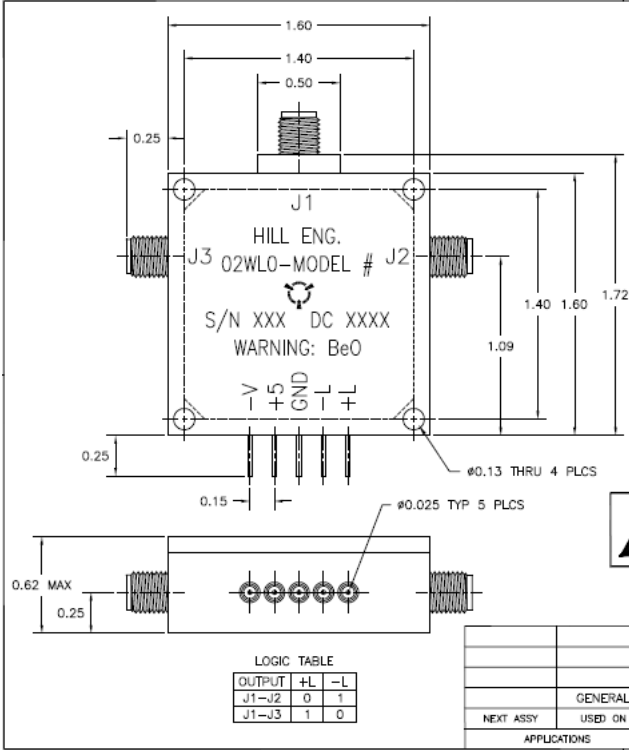
Cage Code: 02WLO

Title: **PRODUCT DATA**
(Subject to change)

Date: 03/6/06

Rev: N/A

Model no: H23-024



REVISIONS			
REV	DESCRIPTION	DATE	APPROVED
-	INITIAL RELEASE ORN #1392	8/21/01	JCH
A	UPDATE PER ECN #3781	5/19/06	SPL
B	REVISED PER ECN # 4098	1/17/07	SPL

- NOTES:
- FINISH
 - PAIN PER PROCEDURE MEI-105.
 - PRIMER: ZRC ZINC PRIMER HILL P/N 172-0003
 - PAIN: FLAT BLACK EPOXY ENAMEL HILL P/N 172-0002
 - MARKING
 - MARK PER PROCEDURE MEI-147.
 - MARKING: 0.09" HIGH BLACK CHARACTERS
 - LABEL: METALIZED POLYESTER SHEET HILL P/N 127-0010.
 - DATECODE FORMAT SHALL BE (YYWK) EXAMPLE: 9912.



LOGIC TABLE

OUTPUT	+L	-L
J1-J2	0	1
J1-J3	1	0

UNLESS OTHERWISE SPECIFIED (INCLUDE PART IN PARTS LIST) DIMENSIONS ARE FRACTIONS DECIMALS ANGLES DEGREES SURFACE FINISH UNLESS OTHERWISE SPECIFIED REMOVE ALL BURRS FROM PARTS	APPROVALS DESIGNED BY L.D. BARKER 8/15/01	DATE 8/15/01	
GENERAL	DESIGNED BY J.C. HILL 8/21/01	8/21/01	
NEXT ASSY USED ON	APPROVED BY J.A. WARD 8/21/01	8/21/01	DRAWING TITLE OUTLINE, 1P2T SWITCH BALANCED LOGIC
APPLICATIONS	DO NOT SCALE DRAWING		