

	Cage Code:	Title:	Date:	Rev:	Model no:
	02WLO	PRODUCT DATA (Subject to change)	11/25/02	N/A	H24-010

This document describes the performance of a high power 1P2T switch. This is a cold switched design i.e.; switched while RF is off. Proper bias levels must be applied when operating this device.

ITEM NO	CHARACTERISTIC	CONDITIONS	MIN	MAX	UNITS	COMMENTS
1	POWER SPECIFICATION	IN BAND				
1.1	FREQUENCY		8	12	GHz	
1.2	PEAK POWER			1500	WATTS	
1.3	PULSE WIDTH			40	μS	
1.4	DUTY			4	%	
1.5	AVG. POWER			60	WATTS	
2	POWER SPECIFICATIONS	GUARD BAND				
2.1	FREQUENCY		12	12.5	GHz	
2.2	PEAK POWER			20	WATTS	
2.3	PULSE WIDTH			0.5	μS	
2.4	DUTY			5	%	
2.5	CW POWER			1	WATT	
3	POWER SPECIFICATIONS	OUT OF BAND				
3.1	FREQUENCY		>12.5		GHz	
3.2	PEAK POWER			0.03	WATTS	
3.3	PULSE WIDTH		CW		μS	
3.4	DUTY		CW		%	
3.5	CW POWER			0.03	WATTS	
4	OPERATING FREQUENCY		9.8	10.4	GHz	
5	INSERTION LOSS					
5.1				1.5	dB	
6	ISOLATION					
6.1	INPUT TO OUTPUT		40		dB	
6.2	OUTPUT TO OUTPUT		40		dB	
7	PHASE					
7.1	MATCHING					NOT SPECIFIED
7.2	TRACKING					NOT SPECIFIED
8	VSWR					
8.1	PORTS NOT SELECTED					INFINITE



Cage Code: 02WLO

Title: **PRODUCT DATA**
(Subject to change)

Date: 11/25/02

Rev: N/A

Model no: H24-010

ITEM NO	CHARACTERISTIC	CONDITIONS	MIN	MAX	UNITS	COMMENTS
8	VSWR (CONT.)					
8.2	INPUT & OUTPUT, SELECTED PORTS			1.4:1		
8.3	TERMINATION			2.0:1		
8.4	SOURCE			1.2:1		
9	HARMONICS & SPURS					
9.1	INTERNALLY GENERATED					NOT SPECIFIED
10	SWITCHING					
10.1	SPEED	50% Logic To 0.5dB		1.5	μS	
10.2	SWITCHING RATE			50	kHz	
10.3	COMMAND LOGIC	RS-422				
10.4	VIDEO LEAKAGE					NOT SPECIFIED
10.5	LOGIC TABLE					SEE DWG 3414
11	D.C. POWER					
11.1	POSITIVE BIAS VOLTAGE		4.8	5.2	VDC	
11.2	NEGATIVE BIAS VOLTAGE		-48	-54	VDC	
11.4	POSITIVE BIAS CURRENT			300	mA	
11.5	NEGATIVE BIAS CURRENT			40	mA	
NOTE: NO OVER-VOLTAGE OR REVERSE POLARITY PROTECTION IS PROVIDED WITH THIS SWITCH.						
12	CONNECTORS					
12.1	RF					SMAF
12.3	DC					Solder Pins
13	MECHANICAL					
13.1	WEIGHT			4	Oz.	
13.2	OUTLINE					SEE DWG 3414
14	ENVIRONMENTAL					
14.1	OPERATING TEMPERATURE	BASEPLATE	-20	+50	°C	
14.2	STORAGE TEMPERATURE		-20	+85	°C	
14.3	POWER DISSIPATION AT BASE-PLATE			13	W	
14.4	VIBRATION LEVEL	AIRCRAFT				Subsonic
14.5	ALTITUDE			25K	FT	



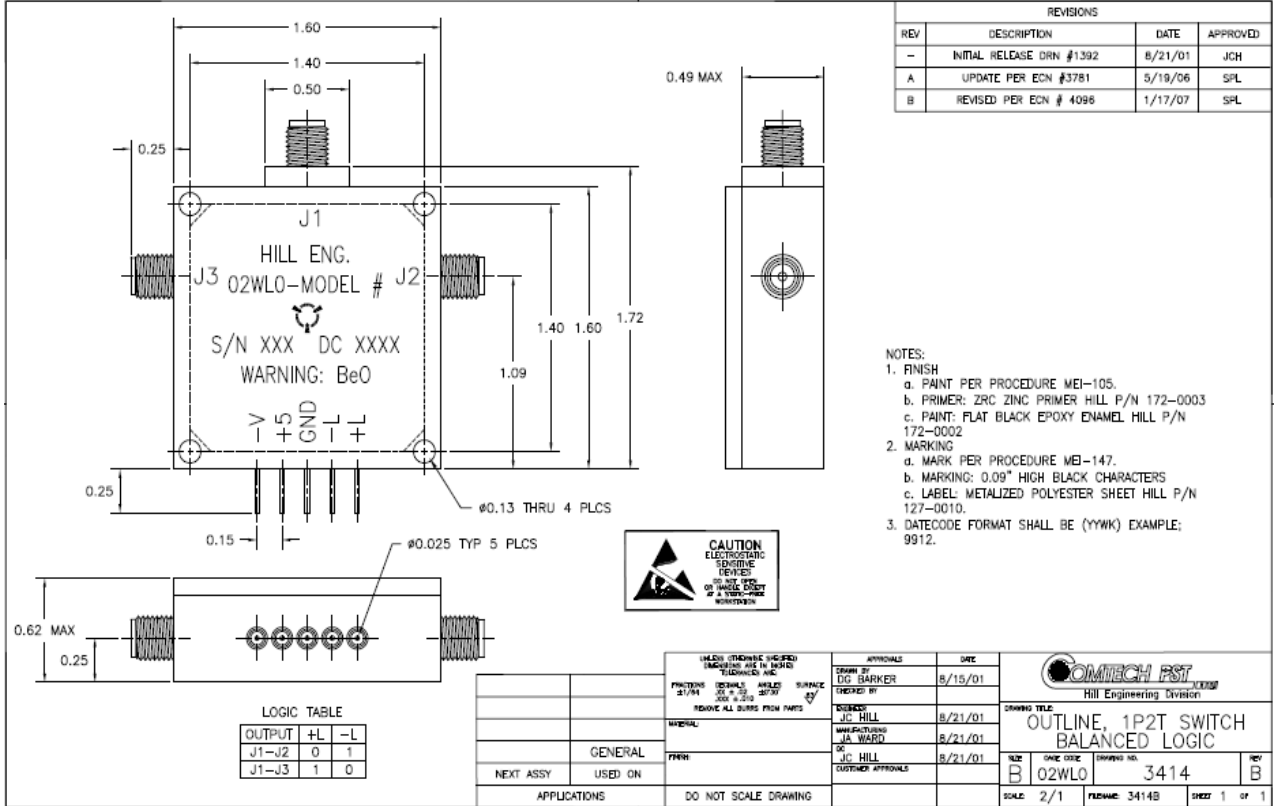
Cage Code: 02WLO

Title: **PRODUCT DATA**
(Subject to change)

Date: 11/25/02

Rev: N/A

Model no: H24-010



REVISIONS			
REV	DESCRIPTION	DATE	APPROVED
-	INITIAL RELEASE DRN #1392	8/21/01	JCH
A	UPDATE PER ECN #3781	5/19/06	SPL
B	REVISED PER ECN # 4086	1/17/07	SPL

- NOTES:
- FINISH
 - PAINT PER PROCEDURE MEI-105.
 - PRIMER: ZRC ZINC PRIMER HILL P/N 172-0003
 - PAINT: FLAT BLACK EPOXY ENAMEL HILL P/N 172-0002
 - MARKING
 - MARK PER PROCEDURE MEI-147.
 - MARKING: 0.09" HIGH BLACK CHARACTERS
 - LABEL: METALIZED POLYESTER SHEET HILL P/N 127-0010.
 - DATECODE FORMAT SHALL BE (YYWK) EXAMPLE: 9912.

UNLESS OTHERWISE SPECIFIED (INCLUDE THIS IN MARKS) TOLERANCES ARE:		APPROVALS	DATE	COMTECH PST Hill Engineering Division
PARTS	DECIMALS	APPROVED	8/15/01	
STRAIGHT	FRACTIONS	DESIGNED BY	JC HILL	SIZE B
MATERIAL		MANUFACTURED BY	JA WARD	ONE CODE 02WLO
FINISH		DATE	8/21/01	DRAWING NO. 3414
NEXT ASSY USED ON		CUSTOMER APPROVALS		REV B
APPLICATIONS		DO NOT SCALE DRAWING		SCALE 2/1
				PARTNAME 3414B
				SHEET 1 OF 1