

	Cage Code:	Title:	Date:	Rev:	Model no:
	02WLO	PRODUCT DATA (subject to change)	10/17/03	N/A	H32-011

This document describes the performance of a high power 1P3T switch. This is a cold switched design i.e.; switched while RF is off. Proper bias levels must be applied when operating this device.

ITEM NO	CHARACTERISTIC	CONDITIONS	MIN	MAX	UNITS	COMMENTS
1	POWER SPECIFICATION	IN BAND				
1.1	FREQUENCY		1200	1400	MHz	
1.2	PEAK POWER			1000	WATTS	
1.3	PULSE WIDTH			30	μS	
1.4	DUTY			10	%	
1.5	AVG. POWER			100	WATTS	
2	POWER SPECIFICATIONS	GUARD BAND				
2.1	FREQUENCY		1400	1600	MHz	
2.2	PEAK POWER			20	WATTS	
2.3	PULSE WIDTH			10	μS	
2.4	DUTY			5	%	
2.5	CW POWER			1	WATT	
3	POWER SPECIFICATIONS	OUT OF BAND				
3.1	FREQUENCY		>1600		MHz	
3.2	PEAK POWER			10	dBm	
3.3	PULSE WIDTH		CW		μS	
3.4	DUTY		CW		%	
3.5	CW POWER			10	dBm	
4	OPERATING FREQUENCY		1200	1400	MHz	
5	INSERTION LOSS					
5.1				0.5	dB	
6	ISOLATION					
6.1	INPUT TO OUTPUT		25		dB	
6.2	OUTPUT TO OUTPUT		25		dB	
7	PHASE					
7.1	MATCHING					NOT SPECIFIED
7.2	TRACKING					NOT SPECIFIED
8	VSWR					
8.1	PORTS NOT SELECTED					INFINITE



Cage Code: 02WLO

Title: **PRODUCT DATA**
(subject to change)

Date: 10/17/03

Rev: N/A

Model no: **H32-011**

ITEM NO	CHARACTERISTIC	CONDITIONS	MIN	MAX	UNITS	COMMENTS
8	VSWR (CONT.)					
8.2	INPUT & OUTPUT, SELECTED PORTS			1.4:1		
8.3	TERMINATION			2.0:1		
8.4	SOURCE			1.2:1		
9	HARMONICS & SPURS					
9.1	INTERNALLY GENERATED					NOT SPECIFIED
10	SWITCHING					
10.1	SPEED	50% Logic To 0.5dB		1	uS	
10.2	SWITCHING RATE			50	kHz	
10.3	COMMAND LOGIC					SEE DWG 2375 below
10.4	VIDEO LEAKAGE					NOT SPECIFIED
10.5	LOGIC TABLE					SEE DWG 2375 below
11	D.C. POWER					
11.1	POSITIVE BIAS VOLTAGE		4.8	5.2	VDC	
11.2	NEGATIVE BIAS VOLTAGE		-66	-74	VDC	
11.2	POSITIVE BIAS CURRENT			400	mA	
11.3	NEGATIVE BIAS CURRENT			100	mA	
NOTE: NO OVER-VOLTAGE OR REVERSE POLARITY PROTECTION IS PROVIDED WITH THIS SWITCH.						
12	INSTALLATION					SEE DWG
13	CONNECTORS					
13.1	RF					SMA (F)
13.3	DC					SOLDER PINS
14	MECHANICAL					
14.1	WEIGHT			4	Oz.	
14.2	OUTLINE					SEE DWG 03H02375-01 below
15	ENVIRONMENTAL					
15.1	OPERATING TEMPERATURE		-40	+71	°C	
15.2	STORAGE TEMPERATURE		-40	+85	°C	
15.3	VIBRATION LEVEL					Supersonic



Cage Code: 02WLO

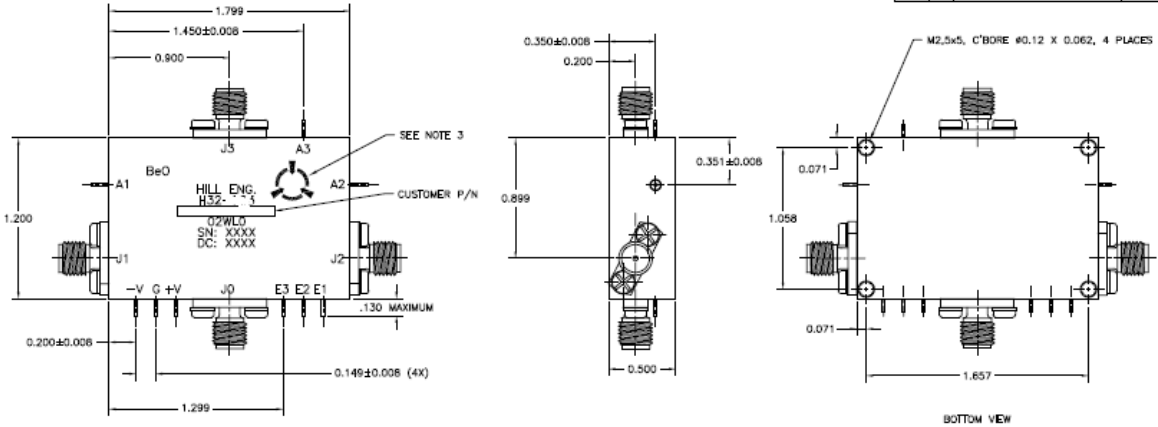
Title: PRODUCT DATA
(subject to change)

Date: 10/17/03

Rev: N/A

Model no: H32-011

ZONE	REV	DESCRIPTION	DATE	APPROVED
-	-	INITIAL RELEASE ECH #566	8/27/98	MMP
A	A	REVISED PER ECH #639	2/19/99	JCH
B	B	REVISED PER ECH #1011 (dgb)	7/30/99	JCH
C	C	REVISED PER ECH #1923 (DL)	8/5/2000	SPL
D	D	REVISED PER ECH #1953 (hnb)	4/5/01	SPL
E	E	REVISED PER ECH #2311 (hnb)	11/30/01	SPL
F	F	REVISED PER ECH #2505 (hnb)	3/29/02	SPL



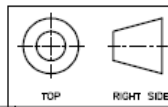
LOGIC TABLE

E1	E2	E3	J0-J1	J0-J2	J0-J3	A1	A2	A3
0	1	1	I LOSS	ISOL	ISOL	-60V±6V	1.0V±0.3V	1.0V±0.3V
1	0	1	ISOL	I LOSS	ISOL	1.0V±0.3V	-60V±6V	1.0V±0.3V
1	1	0	ISOL	ISOL	I LOSS	1.0V±0.3V	1.0V±0.3V	-60V±6V

NOTES:

- FINISH: BODY: CHEMICAL FILM PER HILL IP-125
- IDENTIFY PER MIL-STD-1285
- LOCATE ESD SYMBOL APPROXIMATELY AS SHOWN.
- MARKING:
 - MARK PER PROCEDURE MEI-147.
 - MARKING 0.05" HIGH BLACK CHARACTERS
 - LABEL-METALIZED POLYESTER SHEET P/N 127-0010
 - MARKING SHALL BE PERMANENT AND BE CAPABLE OF PASSING RESISTANCE TO SOLVENTS TESTING IAW MIL-STD-883, METHOD 2015.
- WHERE THERE IS REFERENCE TO INDUSTRY STANDARDS OR MIL-SPEC, THE ISSUE IN EFFECT AT TIME OF PROCUREMENT SHALL APPLY.

WARNING: TOXIC
CONTAINS BERYLLIA
DO NOT OPEN THIS
DEVICE



DATE	BY	DESCRIPTION	REV
8/27/98	MMP	INITIAL RELEASE	1
2/19/99	JCH	REVISED PER ECH #639	2
7/30/99	JCH	REVISED PER ECH #1011 (dgb)	3
8/5/2000	SPL	REVISED PER ECH #1923 (DL)	4
4/5/01	SPL	REVISED PER ECH #1953 (hnb)	5
11/30/01	SPL	REVISED PER ECH #2311 (hnb)	6
3/29/02	SPL	REVISED PER ECH #2505 (hnb)	7

DATE	BY	DESCRIPTION
10/28/03	JCH	INITIAL RELEASE
10/21/03	JCH	REVISED PER ECH #2505 (hnb)
10/13/03	JCH	REVISED PER ECH #2505 (hnb)

DATE	BY	DESCRIPTION
10/17/03	JCH	INITIAL RELEASE

COMTECH PST
Hill Engineering Division

OUTLINE SP3T
TTL SWITCH

REV: C | 02WLO | 03H02875-01 | F

MAC: 2/1 | REVISION: 0308075-01 | REEF: 1 of 1