

	Cage Code:	Title:	Date:	Rev:	Model no:
	02WL0	PRODUCT DATA	6/11/99	None	L16-007

This document describes the performance of a high power 1P1T switch. This is a cold switched design i.e.; switched while RF is off. Proper bias levels must be applied when operating this device.

ITEM NO	CHARACTERISTIC	CONDITIONS	MIN	MAX	UNITS	COMMENTS
1	POWER SPECIFICATION	IN BAND				
1.1	FREQUENCY		8	18	GHz	
1.2	PEAK POWER			20	WATTS	
1.3	PULSE WIDTH		CW		μS	
1.4	DUTY		CW		%	
1.5	CW POWER			20	WATTS	
2	POWER SPECIFICATIONS	GUARD BAND				
2.1	FREQUENCY		18	19	GHz	
2.2	PEAK POWER			1	WATTS	
2.3	PULSE WIDTH		CW		μS	
2.4	DUTY		CW		%	
2.5	CW POWER			1	WATTS	
3	POWER SPECIFICATIONS	OUT OF BAND				
3.1	FREQUENCY		>19		GHz	
3.2	PEAK POWER			0.003	WATTS	
3.3	PULSE WIDTH		CW		μS	
3.4	DUTY				%	
3.5	CW POWER			0.003	WATTS	
4	OPERATING FREQUENCY		8	18	GHz	
5	INSERTION LOSS					
5.1	6 – 16 GHz			1.40	dB	
5.2	16 – 18 GHz			1.60	dB	
6	ISOLATION					
6.1	6 – 18 GHz		55		dB	
7	PHASE					
7.1	MATCHING					NOT SPECIFIED
7.2	TRACKING					NOT SPECIFIED



Cage Code:
02WL0

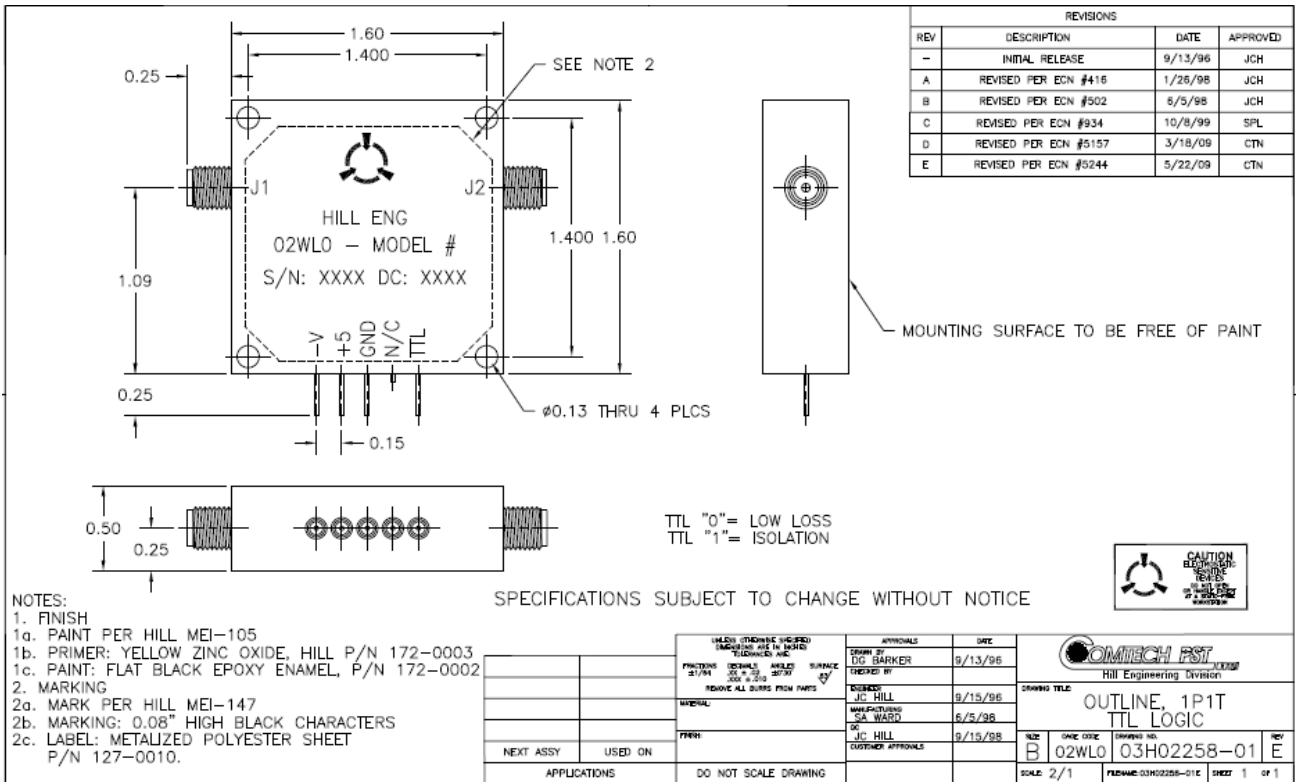
Title:
PRODUCT DATA

Date:
6/11/99

Rev:
None

Model no:
L16-007

ITEM NO	CHARACTERISTIC	CONDITIONS	MIN	MAX	UNITS	COMMENTS
8	VSWR					
8.1	INPUT & OUTPUT, SELECTED PORTS		---	1.8:1		
8.2	PORTS NOT SELECTED					INFINITE
8.3	TERMINATION		---	2.0:1		
8.4	SOURCE		---	1.6:1		
9	HARMONICS & SPURS					
9.1	INTERNALLY GENERATED		---	-50	DBc	
9.1	DESIGN GOAL		---	-70	DBc	
9.3	MEASURES AT INCIDENT POWER		---	0	DBm	
10	SWITCHING					
10.1	SPEED	50% TTL TO 90% RF		120	nS	
10.2	SWITCHING RATE			500	KHz	
10.3	VIDEO LEAKAGE					NOT SPECIFIED
10.4	COMMAND LOGIC TYPE					TTL
10.4	LOGIC TABLE					SEE DWG 2258
11	D.C. POWER					
11.1	POSITIVE BIAS VOLTAGE		4.50	5.50	VDC	
11.2	NEGATIVE BIAS VOLTAGE		-26	-30	VDC	
11.4	POSITIVE BIAS CURRENT			300	mA	
11.5	NEGATIVE BIAS CURRENT			40	mA	
NOTE: NO OVER-VOLTAGE OR REVERSE POLARITY PROTECTION IS PROVIDED WITH THIS SWITCH.						
12	CONNECTORS					
12.1	RF					SMAF
12.3	DC					SOLDER PINS
13	MECHANICAL					
13.1	WEIGHT		---	3	Oz.	
13.2	OUTLINE					SEE DWG 2258
14	ENVIRONMENTAL					
14.1	OPERATING TEMPERATURE		-50	+71	°C	
14.2	STORAGE TEMPERATURE		-50	+85	°C	
14.3	VIBRATION LEVEL					GROUND TRANSPORT



REVISIONS			
REV	DESCRIPTION	DATE	APPROVED
-	INITIAL RELEASE	9/13/96	JCH
A	REVISED PER ECN #416	1/26/98	JCH
B	REVISED PER ECN #502	6/5/98	JCH
C	REVISED PER ECN #934	10/8/99	SPL
D	REVISED PER ECN #5157	3/18/09	CTN
E	REVISED PER ECN #5244	5/22/09	CTN

- NOTES:
- FINISH
 - PAINT PER HILL MEI-105
 - PRIMER: YELLOW ZINC OXIDE, HILL P/N 172-0003
 - PAINT: FLAT BLACK EPOXY ENAMEL, P/N 172-0002
 - MARKING
 - MARK PER HILL MEI-147
 - MARKING: 0.08" HIGH BLACK CHARACTERS
 - LABEL: METALIZED POLYESTER SHEET P/N 127-0010.

SPECIFICATIONS SUBJECT TO CHANGE WITHOUT NOTICE	
FINISH	REMOVE ALL BURRS FROM PARTS
MATERIAL	
PREP	
NEXT ASSY	USED ON
APPLICATIONS	DO NOT SCALE DRAWING

APPROVALS		DATE
DESIGNED BY	DC BARKER	9/13/96
DESIGNED BY	J.C. HILL	9/15/96
MANUFACTURING	S.A. WARD	6/5/98
QC	J.C. HILL	9/15/98
CUSTOMER APPROVALS		

DRAWING TITLE		SIZE	DATE CODE	DRAWING NO.	REV
OUTLINE, 1P1T TTL LOGIC		B	02WL0	03H02258-01	E
SCALE: 2/1		FILENAME: 03H02258-01E		SHEET 1 OF 1	