

	Cage Code:	Title:	Date:	Rev:	Model no:
	02WLO	PRODUCT DATA (subject to change)	2/8/07	None	M20-052

This document describes the performance of a high power 1P2T switch. This is a cold-switched design i.e.; switched while RF is off. Proper bias per section 11 must be applied before operating this switch.

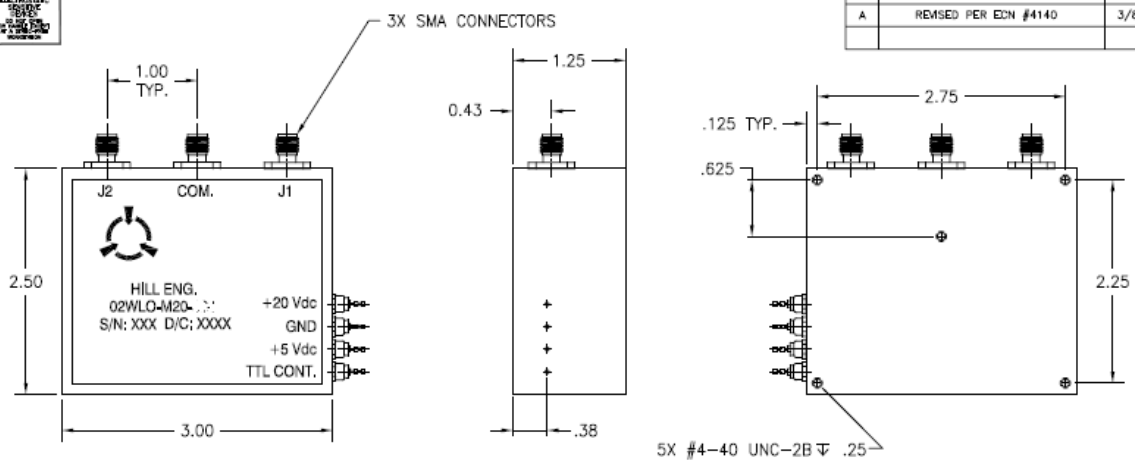
ITEM NO	CHARACTERISTIC	CONDITIONS	MIN	MAX	UNITS	COMMENTS
1	POWER SPECIFICATION	IN BAND				
1.1	FREQUENCY		20	1000	MHz	
1.2	PEAK POWER, absolute maximum	Maximum stress at input		60	WATTS	
1.2.1	PEAK POWER, typical			50	WATTS	
1.3	PULSE WIDTH			CW		
1.4	DUTY			CW		
1.5	AVG POWER			50	WATTS	
2	POWER SPECIFICATIONS	GUARD BAND				
2.1	FREQUENCY		1000	1100	MHz	
2.2	PEAK POWER			5	WATTS	
2.3	PULSE WIDTH		CW		μs	
2.4	DUTY		CW		%	
2.5	CW POWER			5	WATTS	
3	POWER SPECIFICATIONS	OUT OF BAND				
3.1	FREQUENCY		>1100		MHz	
3.2	PEAK POWER			33	dBm	
3.3	PULSE WIDTH			CW	μs	
3.4	DUTY			CW	%	
3.5	CW POWER			33	dBm	
4	OPERATING FREQUENCY		20	1000	MHz	
5	INSERTION LOSS					
		500-1000 MHz		0.75	dB	
		20-500 MHz		0.5	dB	
6	ISOLATION					
6.1	I/O and O/O					
		500-1500 MHz	40			
		20-500 MHz	45		dB	
7	PHASE					
7.1	MATCHING					NOT SPECIFIED
7.2	TRACKING					NOT SPECIFIED
8	VSWR					

	Cage Code:	Title:	Date:	Rev:	Model no:
	02WLO	PRODUCT DATA (subject to change)	2/8/07	None	M20-052

ITEM NO	CHARACTERISTIC	CONDITIONS	MIN	MAX	UNITS	COMMENTS
8.1	PORT SELECTED			1.5:1		
8.2	PORT NOT SELECTED			>20:1		INFINITY (reflective)
8.3	LOAD			2.0:1		
8.4	SOURCE			1.5:1		
9	HARMONICS & SPURS					
9.1	INTERNALLY GENERATED	TRANSMIT MODE			dBc	Not Specified
10	SWITCHING					
10.1	SPEED	TO 0.50DB I.L.		40	μs	
10.2	SWITCHING RATE			10	kHz	
10.3	VIDEO LEAKAGE			1.0	Vpp	
10.4	COMMAND LOGIC	TTL				
10.5	LOGIC TABLE	'0' selects COM-J1 '1' selects COM-J2				
11	D.C. POWER					
11.1	POSITIVE BIAS VOLTAGE 1		4.80	5.20	VDC	
11.3	POSITIVE BIAS VOLTAGE 2		19.5	20.5	VDC	
11.4	POSITIVE BIAS CURRENT 1			200	mA	
11.4	POSITIVE BIAS CURRENT 2			100	mA	
11.5	NOTE 2: Voltage Protection – This unit does not have over-voltage or reverse polarity protection on any bias port.					
12	CONNECTORS					
12.1	RF					SMA(F)
12.3	DC & LOGIC					Solder Terminal
13	MECHANICAL					
13.1	WEIGHT			0.7	LBS	
13.2	OUTLINE					Dwg 4151 below
14	ENVIRONMENTAL					Designed to meet
14.1	OPERATING TEMPERATURE		-40	+80	°C	
14.2	STORAGE TEMPERATURE		-40	+85	°C	
14.3	VIBRATION LEVEL	MIL-STD-810F				Method 514.5 Cat 20, C3 and C4 (all three axes)
14.4	HUMIDITY RH			95%		
14.4	ALTITUDE	MIL-STD-810F				Method 500.4 air transport
14.5	SHOCK	MIL-STD-810F				Method 516.5, proc I, IV, V, VI
14.6	BALLISTIC SHOCK	MIL-STD-810F				Method 522 Proc V

Federal Cage Code 02WLO


	Cage Code:	Title:	Date:	Rev:	Model no:
	02WLO	PRODUCT DATA (subject to change)	2/8/07	None	M20-052



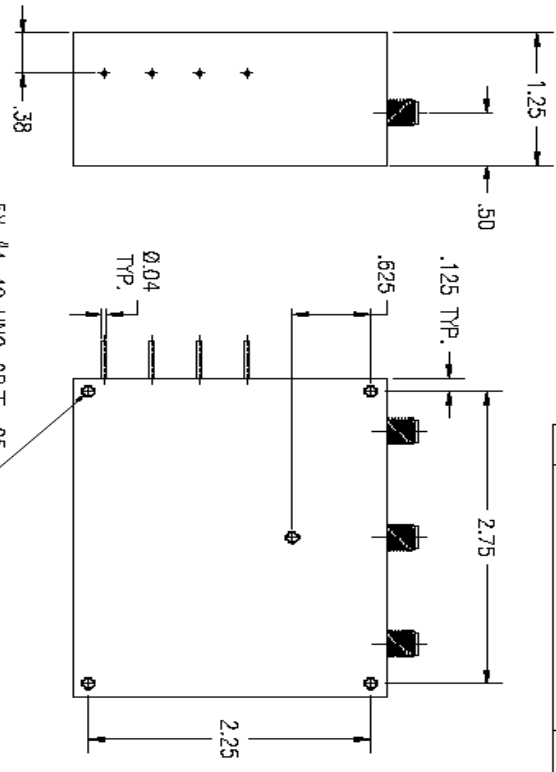
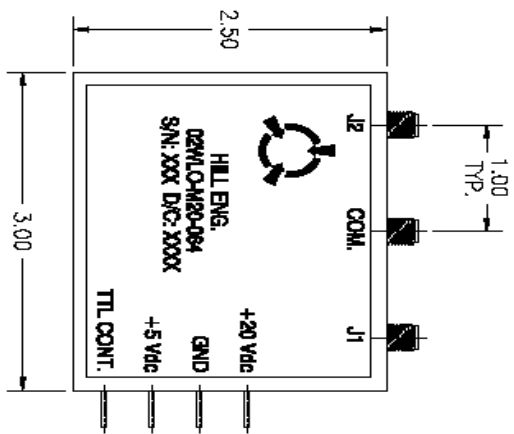
REVISIONS			
REV	DESCRIPTION	DATE	APPROVED
-	INITIAL RELEASE EDRN #3037	12/4/06	SPL
A	REVISED PER EDN #4140	3/8/07	RFF

- NOTES:
- FINISH:
 - CHEMICAL FILM PER HILL IP-125.
 - MARKING:
 - MARK PER MEI-147.
 - MARKING: .09" BLACK CHARACTERS.
 - LABEL: METALIZED POLY SHEET P/N 127-0010.

TTL	SELECTED PATH
0	COM-J1
1	COM-J2

UNLESS OTHERWISE SPECIFIED DIMENSIONS ARE IN INCHES TOLERANCES ARE:		APPROVALS	DATE	
FUNCTIONS	DECIMALS	DESIGNED BY	12/1/06	
25/104	100 ±	CHECKED BY		DRAWING TITLE
		DESIGNED BY	12/4/06	OUTLINE, SPDT
		MANUFACTURED BY	12/4/06	
		QC	12/4/06	
		CUSTOMER APPROVALS		
MATERIAL				SIZE
				B
FINISH	SEE NOTE 1			CAGE CODE
				02WLO
NEXT ASSY	USED ON			DRAWING NO.
				4151
APPLICATIONS	DO NOT SCALE DRAWING			REV
				A
				SCALE
				FULL
				FILENAME
				4151A
				SHEET
				1 of 1

	Cage Code:	Title:	Date:	Rev:	Model no:
	02WL0	PRODUCT DATA (subject to change)	2/8/07	None	M20-052



TTL	SELECTED PATH
0	COM-J1
1	COM-J2

- NOTES:
- FINISH:
 - CHEMICAL FILM PER MIL-C-5541, CLASS 1A, YELLOW.
 - MARKING:
 - MARK PER MIL-147.
 - MARKING: .06" BLACK CHARACTERS.
 - LABEL: METALIZED POLY SHEET P/N 127-0010.

REVISIONS			
REV	DESCRIPTION	DATE	APPROVED
-	INITIAL RELEASE EDRN #3037	12/4/06	SPL

USES OUTLINE SPECIFIED DIMENSIONS UNLESS OTHERWISE NOTED. DIMENSIONS ARE TO CENTER UNLESS NOTED OTHERWISE. REMOVE ALL BURRS FROM PARTS.		APPROVALS DESIGNED BY: SP LEROUX CHECKED BY: J.A. ALLEN DATE: 12/4/06	
DRAWING TITLE: OUTLINE,SPDT		DATE: 12/4/06	
HILL ENG. GEN/COM-064		DATE: 12/4/06	
MANUFACTURED BY: J.A. ALLEN		DATE: 12/4/06	
DRAWN BY: SP LEROUX		DATE: 12/4/06	
CHECKED BY: J.A. ALLEN		DATE: 12/4/06	
APPROVED BY: J.A. ALLEN		DATE: 12/4/06	
NEXT ASSY: M20-064		USED ON:	
APPLICATIONS:		DO NOT SCALE DRAWING	

	
REV: B FULL: 02WL0 PART: 4151	SHEET: 1 OF 1