

	Cage Code:	Title:	Date:	Rev:	Model no:
	02WLO	PRODUCT DATA (subject to change)	6/7/06	None	M20-069

This document describes the performance of a high power 1P2T switch. This is a cold-switched design i.e.; switched while RF is off. Proper bias per section 11 must be applied before operating this switch.

ITEM NO	CHARACTERISTIC	CONDITIONS	MIN	MAX	UNITS	COMMENTS
1	POWER SPECIFICATION	IN BAND				
1.1	FREQUENCY		1000	2900	MHz	
1.2	PEAK POWER	ABSOLUTE MAX.		200	WATTS	
1.3	PULSE WIDTH			1000	μs	
1.4	DUTY			85	%	
1.5	AVG POWER	ABSOLUTE MAX		170	WATTS	
2	POWER SPECIFICATIONS	GUARD BAND				
2.1	FREQUENCY		2900	3080	MHz	
2.2	PEAK POWER			10	WATTS	
2.3	PULSE WIDTH			10	μs	
2.4	DUTY			10	%	
2.5	AVG POWER			1	WATT	
3	POWER SPECIFICATIONS	OUT OF BAND				
3.1	FREQUENCY		>3080		MHz	
3.2	PEAK POWER			30	dBm	
3.3	PULSE WIDTH			CW	μs	
3.4	DUTY			CW	%	
3.5	CW POWER			30	dBm	
4	OPERATING FREQUENCY		1000	2600	MHz	
5	INSERTION LOSS			0.8	dB	
6	ISOLATION					
6.1			25		dB	
7	PHASE					
7.1	MATCHING					NOT SPECIFIED
7.2	TRACKING					NOT SPECIFIED
8	VSWR					
8.1	PORT SELECTED			1.7:1		
8.2	PORT NOT SELECTED			>20:1		INFINITY
8.3	LOAD			2.0:1		
8.4	SOURCE			1.15:1		

	Cage Code:	Title:	Date:	Rev:	Model no:
	02WLO	PRODUCT DATA (subject to change)	6/7/06	None	M20-069

ITEM NO	CHARACTERISTIC	CONDITIONS	MIN	MAX	UNITS	COMMENTS
9	HARMONICS & SPURS					
9.1	INTERNALLY GENERATED	TRANSMIT MODE			dBc	Not Specified
10	SWITCHING					
10.1	SPEED	FROM 50% TTL TO 0.50DB of I.L.		40	us	
10.2	SWITCHING RATE	10% DUTY		1.0	KHz	
10.3	VIDEO LEAKAGE			1	Vpp	Across 50 Ohms
10.4	COMMAND LOGIC	TTL				
10.5	LOGIC TABLE					SEE Dwg 03H4359-01 below
11	D.C. POWER					
11.1	BIAS VOLTAGE		22	28	VDC	
11.4	BIAS CURRENT			500	mA	
11.5	NOTE 1: SINGLE-ENDED TTL. CONTROL LINES SHOULD BE LESS THAN 4 FT, AND SHOULD BE SHIELDED. NOTE 2: NO REVERSE POLARITY PROTECTION IS PROVIDED					
12	CONNECTORS					
12.1	RF					TNC
12.3	DC & Logic					9 pin sub D
13	MECHANICAL					
13.1	WEIGHT			6	Oz	
13.2	OUTLINE					See Dwg 03H4359-01 below
14	ENVIRONMENTAL					
14.1	OPERATING TEMPERATURE		-10	+60	°C	
14.2	STORAGE TEMPERATURE		-20	+70	°C	
14.3	VIBRATION LEVEL					GROUND TRANSPORT



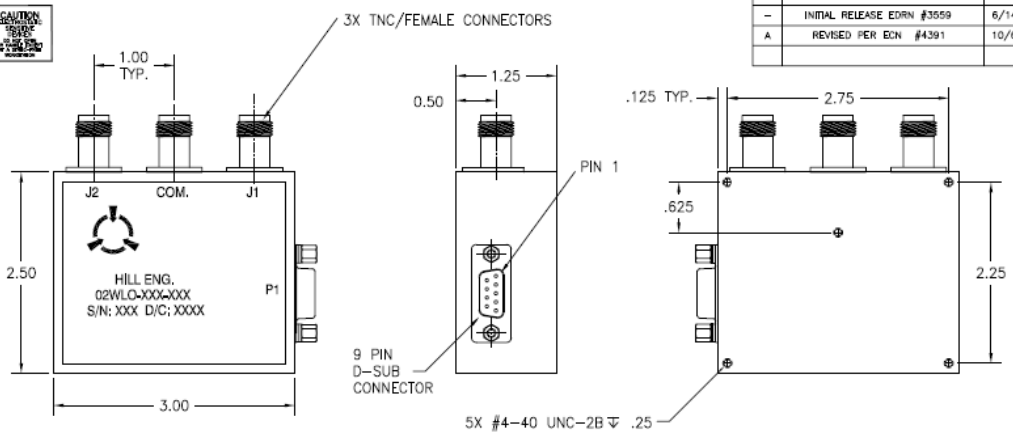
Cage Code: 02WL0

Title: **PRODUCT DATA**
(subject to change)

Date: 6/7/06

Rev: None

Model no: **M20-069**



REVISIONS			
REV	DESCRIPTION	DATE	APPROVED
-	INITIAL RELEASE EDRN #3559	6/14/07	RFF RMP
A	REVISED PER EDRN #4391	10/6/08	CTN

CONNECTOR P1 PIN ASSIGNMENT

PIN #	DESCRIPTION
1	+2BVDC
2	GND
3	GND
4	TTL
5	N/C
6	N/C
7	N/C
8	N/C
9	N/C

TTL	SELECTED PATH
0	COM-J1
1	COM-J2

- NOTES:
- FINISH:
 - CHEMICAL FILM PER HILL IP-125.
 - MARKING:
 - MARK PER MEJ-147.
 - MARKING: .09" BLACK CHARACTERS.
 - LABEL: METALIZED POLY SHEET P/N 127-0010.

UNLESS OTHERWISE SPECIFIED DIMENSIONS ARE IN INCHES TOLERANCES ARE:				APPROVALS		DATE
FUNCTION	DESIGNED BY	APPROVED BY	SUBMIT	DESIGNED BY	DATE	
M20-070	S. FLORES-FUNES	JR ALLEN		S. FLORES-FUNES	6/14/07	
M20-069	JR ALLEN	RM PADULA		JR ALLEN	6/18/07	
NEXT ASSY	USED ON	SEE NOTE 1		RM PADULA	6/18/07	
APPLICATIONS	DO NOT SCALE DRAWING					



OUTLINE, SPDT

SIZE	CAGE CODE	DRAWING NO.	REV
B	02WL0	03H04359-01	A
SCALE	FULL	FILENAME: 03H04359-01a	SHEET 1 of 1