

	Cage Code:	Title:	Date:	Rev:	Model no:
	02WLO	<b>PRODUCT DATA</b> <b>(subject to change)</b>	10/7/99	None	<b>UH20-222</b>

**This document describes the performance of a high power 1P2T-TR switch. This is a cold switched design i. e; switched while RF is off. Proper bias levels per item no.11 must be applied when operating this device.**

ITEM NO	CHARACTERISTIC	CONDITIONS	MIN	MAX	UNITS	COMMENTS
1	POWER SPECIFICATION	IN BAND				
1.1	FREQUENCY		140	450	MHz	
1.2	PEAK POWER	ABSOLUTE MAXIMUM at XMT input	--	2000	WATTS	
1.3	PULSE WIDTH		--	700	μS	
1.4	DUTY		--	20	%	
1.6	AVG POWER		--	400	WATTS	
2	POWER SPECIFICATION	GUARD BAND				
2.1	FREQUENCY		450	520	MHz	
2.2	PEAK POWER		--	200	WATTS	
2.3	PULSE WIDTH			CW	μS	
2.4	DUTY			CW	%	
2.6	CW POWER		--	200	WATTS	
3	POWER SPECIFICATION	OUT OF BAND				
3.1	FREQUENCY		>520	--	MHz	
3.2	PEAK POWER		--	0.3	WATTS	
3.3	PULSE WIDTH		--	CW	μS	
3.4	DUTY		--	CW	%	
3.6	CW POWER		--	0.3	dBm	
4	OPERATING FREQUENCY		140	450	MHz	
5	INSERTION LOSS	XMT	--	0.4	dB	
5.1		RCV	--	1.0	dB	
6	ISOLATION	XMT	45		dB	
6.1		RCV	33		dB	
7	PHASE SPECIFICATION					
7.1	MATCHING		-3	+3	DEG	
7.2	PHASE TRACKING		-3	+3	DEG	

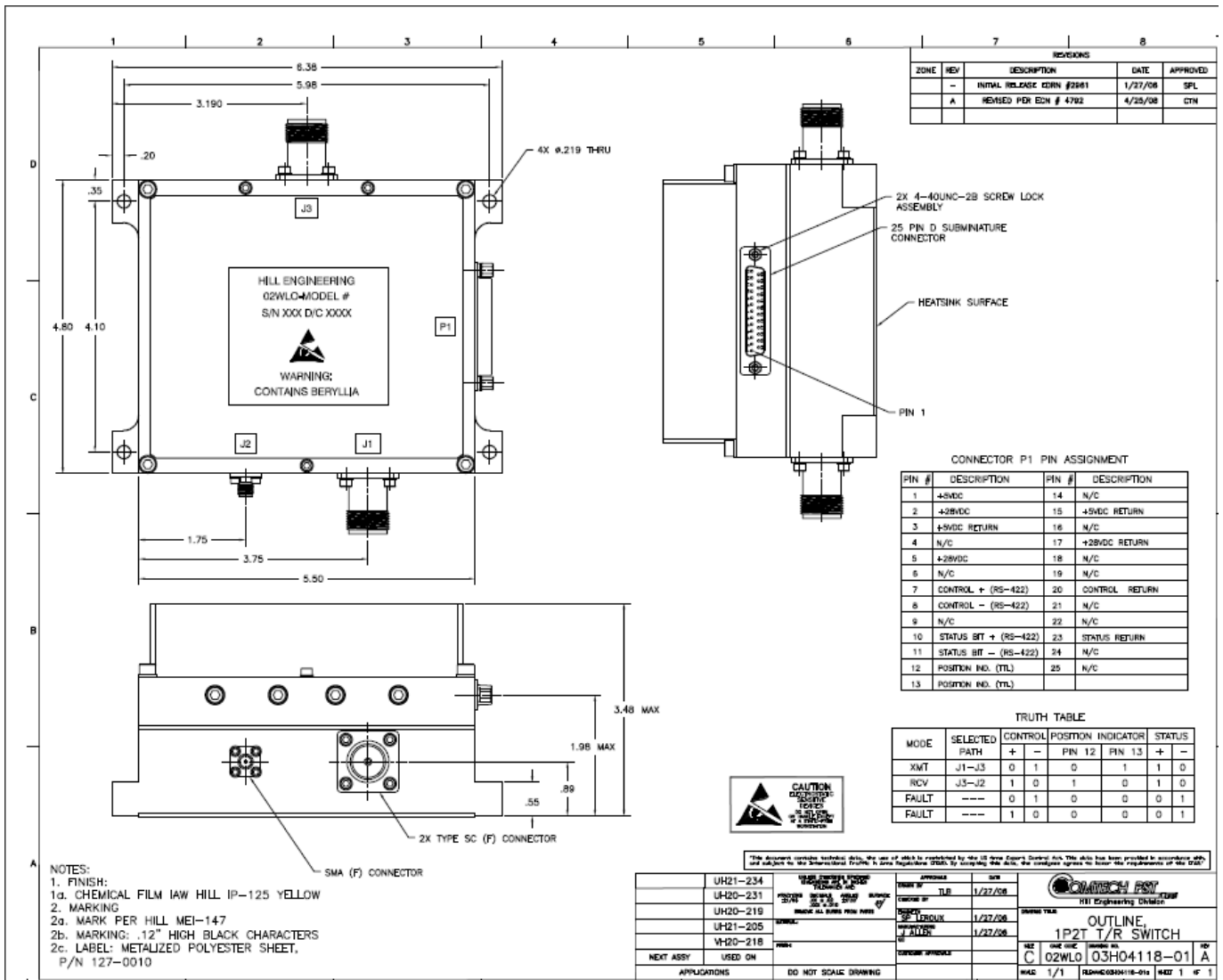
Federal Cage Code 02WLO

	Cage Code:	Title:	Date:	Rev:	Model no:
	02WLO	<b>PRODUCT DATA</b> <b>(subject to change)</b>	10/7/99	None	<b>UH20-222</b>

ITEM NO	CHARACTERISTIC	CONDITIONS	MIN	MAX	UNITS	COMMENTS
8	VSWR					
8.1	INPUT & OUTPUT	SELECTED PORTS	---	1.4:1	--	
8.2	PORTS NOT SELECTED		--	--	--	INFINITY
8.3	LOAD		---	2.0:1	--	
8.4	SOURCE		---	1.3:1	--	
9	HARMONICS & SPURS					
9.1	INTERNALLY GENERATED		-40	--	dBc	
10	SWITCHING SPECIFICATIONS					
10.1	SWITCHING SPEED	50% TTL TO 90% RF	--	25	μS	
10.2	SWITCHING RATE		--	2	kHz	
10.3	VIDEO LEAKAGE		--	10	Vpp	
10.4	COMMAND LOGIC TYPE					RS-422
10.5	LOGIC TABLE					SEE DWG below
11	D.C. SPECIFICATIONS					
11.1	POSITIVE 1 BIAS VOLTAGE		4.8	5.5	V	
11.2	POSITIVE 2 BIAS VOLTAGE		26	30	V	
11.3	NEGATIVE BIAS VOLTAGE		--	--	V	DEVELOPED INTERNALLY
11.4	POSITIVE 1 BIAS CURRENT		--	1000	mA	
11.5	POSITIVE 2 BIAS CURRENT		--	2000	mA	
11.6	NOTE 1: To prevent damage to the switch apply the +5V first then the +28V. No over-voltage or reverse polarity protection is provided.					
12	CONNECTORS & INTERFACE					
12.1	RF:	XMT	--	--	--	SC(F)
12.2	RF	TO RCVR	--	--	--	SMA(F)
12.3	DC	P1	--	--	--	DCMM-25
13	MECHANICAL					
13.1	WEIGHT		--	5	LBS	
13.2	SIZE		--	--	IN.	SEE DWG below
13.3	FINISH		--	--	--	SEE DWG below
14	ENVIROMENTAL					
14.1	OPERATING TEMPERATURE		-20	+60	°C	
14.2	STORAGE TEMPERATURE		-55	+85	°C	
14.3	VIBRATION LEVEL					GND TRANSPORT
14.4	DEVICE SCREENING	LEVEL 2				SCREENING PER HILL ENG QP 121

Federal Cage Code 02WLO

	Cage Code:	Title:	Date:	Rev:	Model no:
	02WLO	PRODUCT DATA (subject to change)	10/7/99	None	UH20-222



Federal Cage Code 02WLO