

# UHF-TV Transmitter Tube



## IOT 4480

The IOT 4480 is a high-efficiency inductive output tube operating in the UHF-TV frequency range of 470–810 MHz. Engineered for optimal performance, it delivers robust RF output across a wide power range and is ideally suited for digital broadcast applications.

### SPECIFICATIONS

Performance	Min	Max	Units
Heater Voltage	5	7	V
Heater Current, Operating	20	30	A
Heater Current, Surge	–	60	A
Heater Warm-up Time	300	–	Sec
Beam Voltage	22	36	kV
Quiescent Current	0.4	0.7	A
Body Current	–	60	A
Solenoid Current	22	27	A
Collector Dissipation	–	55	kW
Load VSWR	–	1.5:1	–
Bias Voltage (ref to cathode)	-50	-150	V
Grid Current	–	± 150	mA
Ion Pump Current, Beam On	–	20	µA
Peak/Average Output Power (8 VSB)	–	130/30	KW/kw
Peak/Average Input Power (8 VSB)	–	1500/250	W

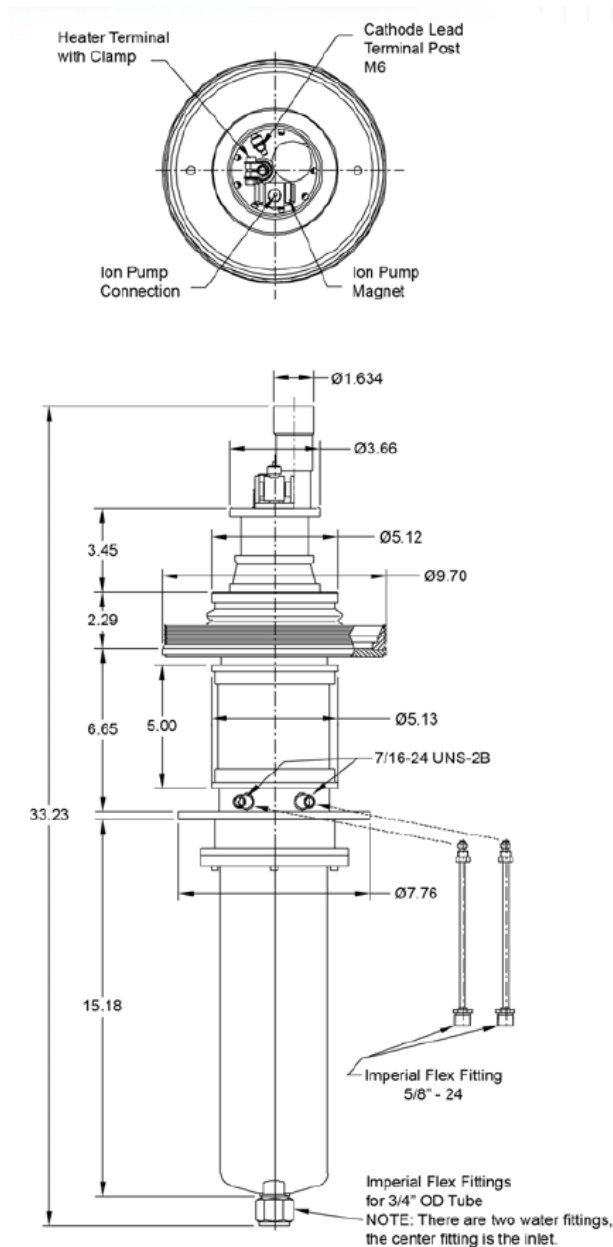


Mechanical	
Dimensions	See outline drawing
Mounting Position	Collector end down
Focusing	Electromagnet
Cooling	
Maximum Inlet Pressure	60 psi
Maximum Inlet Water Temperature	55°C
Maximum Outlet Water Temperature	75°C
Minimum Collector Flow (RO or DI water)	14.5 gpm
Minimum Body Flow (RO or DI water)	1.3 gpm
Collector Pressure Drop	40 psi
Air Flow to Input Cavity Mounted to Tube	90 cfm
Air Pressure at Intake	5"
Maximum Air Temperature at Intake	60°C
Weight (approx.)	50 lb

# UHF-TV Transmitter Tube

IOT 4480

Outline Drawing (inches)



Detailed outline drawings are available on request. Specifications and features are subject to change without notice.




### Headquarters

3100 Lomita Blvd  
Torrance, CA 90505  
T: 310-517-6000

### Williamsport, PA

1035 Westminster Dr.  
Williamsport, PA 17701  
T: 570-326-3561



StellantSystems.com     
Sales-PST@stellantsystems.com  
info@stellantsystems.com