

Hydrogen Filled Thyatron

L4884C

The L4884C is an electron tube suitable for line type modulator switching.

KEY FEATURES

- Rugged metal / ceramic construction
- Auxiliary grid may be DC primed or pre-pulsed

SPECIFICATIONS

Maximum Ratings	
Peak Anode Voltage (epy)	XX kV
Peak Anode Current (ib)	XX A
Average Anode Current (Ib)	XX ADC
RMS Anode Current (Ip)*	XX ARMS
Anode Current Rate of Rise (dib/dt)	XX A/μs
Anode Delay Time (tad)	XX μs
Time Jitter (tj)	XX μs
Ambient Temp	0° to 40+°C

Ancillary Supplies	Nom	Min	Max	Units
Peak Control Grid Voltage (egy)				V
Control Grid Voltage Pulse Width (tp)				μs
Control Grid Voltage Rise Time (tr)				μs
Control Grid Source Drive Impedance (Zg)				Ω
Negative Control Grid Bias (Ecc)				VDC
Heater Voltage (Ef)				VAC/VDC
Heater Current at 6.3 V (If)				AAC/ADC
Reservoir Voltage (Eres)				VAC/VDC
Warm-up Time (tk)				Min.



Hydrogen Filled Thyatron

L4884C

Outline Drawing (inches)

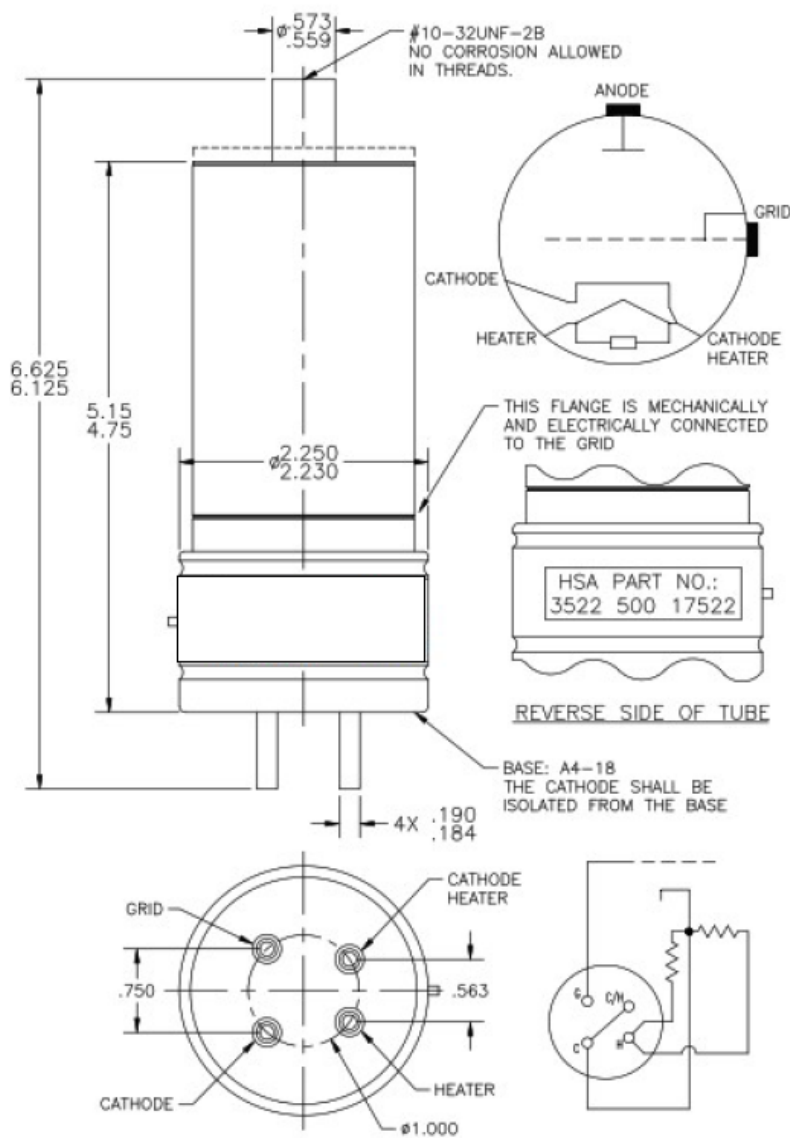


FIGURE 1

Detailed outline drawings are available on request. Specifications and features are subject to change without notice.

Headquarters

3100 Lomita Blvd
 Torrance, CA 90505
 T: 310-517-6000

Williamsport, PA

1035 Westminster Dr.
 Williamsport, PA 17701
 T: 570-326-3561



StellantSystems.com

Sales-PST@stellantsystems.com

info@stellantsystems.com