

Klystron — Cathode Pulsed

L5782

The L5782 is a tunable cavity, cathode pulsed klystron amplifier which operates over the frequency range 2.7-3.0 GHz with power output of 0.5 to 1.8 Mw peak. Focusing is by electromagnet. Cooling is by forced air. DS57821102

SPECIFICATIONS

| Performance Characteristics | |
|-----------------------------|---------------|
| Frequency Range | 2.7 - 3.0 GHz |
| Instantaneous Bandwidth | 15 MHz |
| Peak Output Power | 1.5 MW |
| Power Input (max) | 7.5 W |
| Duty (RF) | 0.16% |
| Duty (video) | 0.22% |
| Gain | 115 A |
| Pulse Width (max) | 6 μ s |

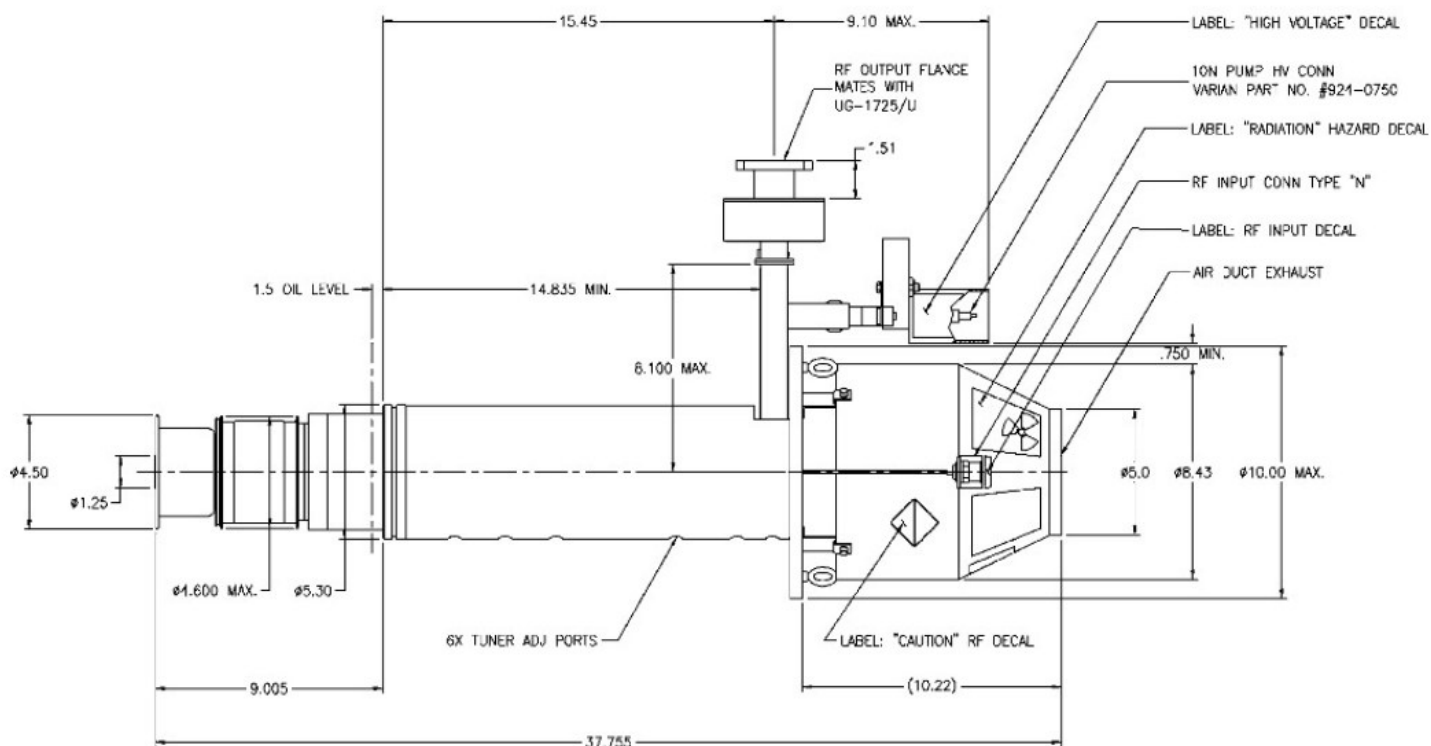
| Typical Operating Conditions | |
|------------------------------------|--------------------------------|
| Beam Voltage | 79 KV |
| Beam Current | 40 - 47 A |
| Beam Power (max) | 6.6 KW |
| Heater Voltage | 5.0 - 7.0 V |
| Heater Current | 20 - 32 A |
| Cooling Air | 160 cfm |
| Waveguide Pressure (min) Freon -12 | 2 psig |
| ION Pump Voltage | 3 KV |
| Focusing Magnet | Ogallala 4IC2081 or Equivalent |
| Focusing Magnet Voltage (max) | 100 V |
| Focusing Magnet Current (max) | 25 A |

| Mechanical | |
|----------------------------|----------------------|
| Dimensions | 36 x 10 x 17 in |
| Weight | 90 lbs |
| Focusing Solenoid | Will advise |
| Mounting Position | Any |
| Solenoid Weight | 300 lbs |
| RF Input Connector | Type N |
| RF Output | Mates with UG-1725/u |
| Heater & Cathode Connector | Socket pads |
| Tuner Torque (max) | 200 oz-in |
| Coolant Connectors | See Outline |

Klystron — Cathode Pulsed

L5782

Outline Drawing (inches)



Detailed outline drawings are available on request. Specifications and features are subject to change without notice.

Headquarters

3100 Lomita Blvd
Torrance, CA 90505
T: 310-517-6000

Williamsport, PA

1035 Westminster Dr.
Williamsport, PA 17701
T: 570-326-3561



StellantSystems.com   

Sales-PST@stellantsystems.com

info@stellantsystems.com